

API – Application Programming Interface

Connect Pythagoras to your own systems

The Pythagoras API is an interface module, which allows extended and complex integrations with 3rd party systems based on a standardized set of communication methods. The client can develop their own front-end for their system according to internal requirements. The API can then be called to request data and execute certain functions.

Main Advantages

- Request information and execute screenings from 3rd party applications to fit into your workflow
- Build the onboarding screening process into your internal workflow programs
- Notifications triggered by Pythagoras can be used to perform actions in 3rd party applications, such as alerts or messages
- Cost effective compared to deployment of large numbers of client PCs
- Optional module for browser-based Name Check available as a ready-to-use functionality

Key Features

- Deployed together with Pythagoras modules in your IT infrastructure, behind your firewall
- Very fast API calls with concurrency support
- Screening requests can be executed as zero-footprint screening or saved directly into the database
- Request Channel to retrieve structured results using a predefined set of methods
- Notification Channel provides structured information about process results and status changes
- Testing tool to verify connections and functionality during implementation or maintenance
- Supports large numbers of users who need to use specific functionalities
- The SOAP interface provides access to typical Pythagoras functionalities, such as screening, and the data exchange is done with transparent XML structures

Some methods included in the API:

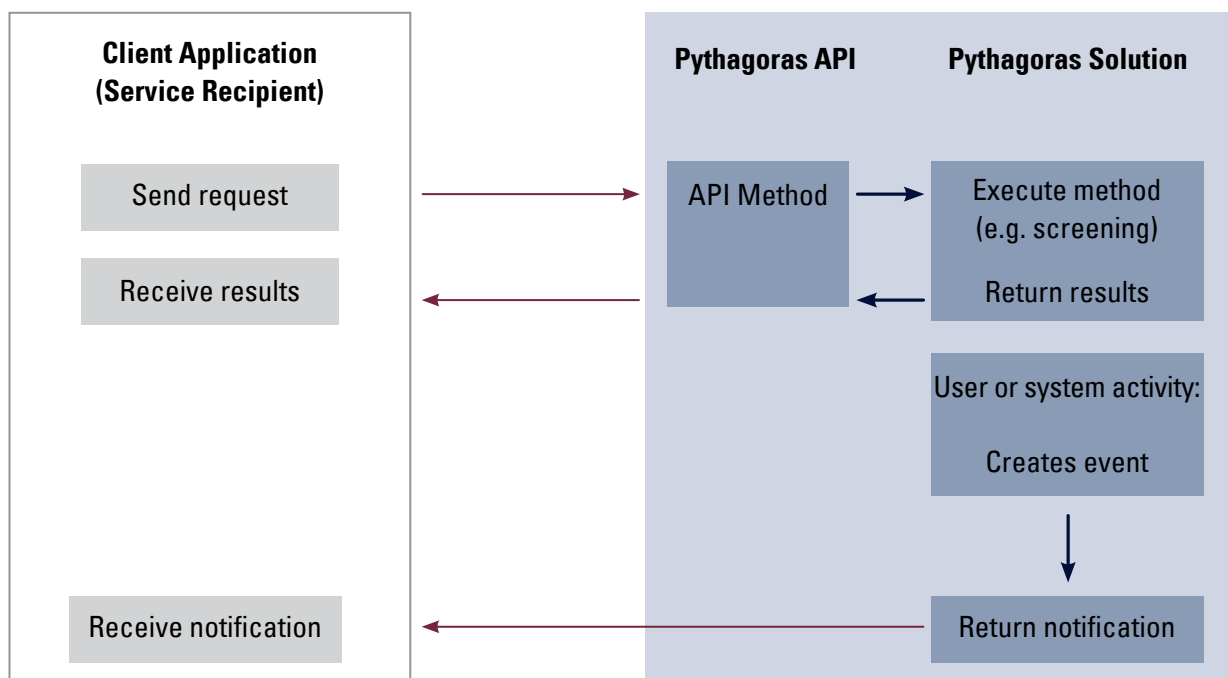
- Ad-hoc screening
- Onboarding screening
- Reference Entry data request
- View hit alerts and matched records
- Get data details of partners
- View decision alerts
- Ping target URL for testing

How it works

Technically, the Pythagoras API acts like a client for Pythagoras Solutions, i.e. using the API requires Pythagoras Partner Screening or Transaction Screening to be installed in the user's IT infrastructure.

The communication between the 3rd party Client Application and the Pythagoras API is session-based. The usage of the Pythagoras functionality needs a valid API session being opened with the StartSession method. The API offers over 40 different predefined methods to retrieve structured results.

The Notification functionality requires a SOAP webservice with the specified interface on the client side. This service receives the process results or status changes in an asynchronous manner. This is useful if events in Pythagoras should trigger an action in the 3rdparty system. Events can be alerts from the overnight screening or status changes made by users during the alert and decision processing.



Pythagoras Name Check

Enables a web-browser based ad-hoc name search function to be distributed to a large group of users within your organization's intranet. As an out-of-the-box feature based on our API it saves you the cost and time to develop your own Web Application.

- Allows a quick search at multiple locations (e.g. customer service counters)
- No need for client PC installations
- Easy and intuitive to use
- View and print report function